



Benefit from the technology behind the first European-made, entirely computer-automated photo studios

ScanCube 626

ScanCube 626 e-360

Images are online stores showcases. Their quality, interactivity and detail reassure shoppers and make up for the impossibility of touching and trying products contrary to physical stores.

Increased sales, reduced returns and customer loyalty are all directly related to the quality of visual images. ScanCube mini photo studios were created with three priorities in mind: user-friendly technology, quality and efficiency.

As the inventor of the entirely computer-piloted photo booth, from lighting gradation down to the camera and image settings, ScanCube offers a simpler, more productive approach to product photography.

Taking a product's photo, making a 3D animation or a 360° video takes very little time:

- 1- put the item in the photo booth or on the turntable;
- 2- preview, zoom and reframe from behind the computer screen;
- 3- choose a pre-configured lighting setting;
- 4- click... and the software takes care of the rest.

To find out more, please read "The ScanCube Solution" at www.scancube.fr

The ScanCube line features 8 photo studios that come in different sizes and with different equipment:

- the basic version includes the Easy-ScanCube software, a photo booth and accessories
- the e-360 version also includes a turntable to create 360° product photos and 360° videos

All basic versions may later be upgraded to e-360.

All ScanCube products are developed and made in France.



ScanCube 626 and ScanCube 626 e-360 Photo Studios

- Uses, dimensions, weight p. 2
- Main functions p. 3
- About Easy-ScanCube software p. 4-5
- About the 626 photo booth p. 6
- About the 626 e-360 turntable p. 6
- Required technological configuration p. 6
- Studio composition p. 6

Use type, size, weight

Possible uses: Textile on bust dummy, kids' fashion (dummy), luggage, sports goods, small furniture, decoration...

The 516 photo studio can photograph any type of object with dimensions below:

Without the turntable:

- For a bird's-eye view*: base: 83 x 77 cm
- For a front-on view*: base: 77 x 65 cm height: 145 cm

With the turntable:

- For a front-on view*: base: 64 x 64 cm height: 134 cm

* The maximum dimensions listed here for products that may be photographed in 516 photo booths are given as estimates; depending on the shape of the object, the dimensions may be bigger or smaller.

For your convenience, it is recommended to allow 3 to 5 centimeters extra room.

Dimensions, weight ScanCube 626 and comparison with the 516 ScanCube



ScanCube 626 photo booth features:

- Weight supported by the LED lit floor: 35 kg
- Weight of the booth: 98 kg
- Connection type: USB2
- Energy consumption: 220/240 V - 3A

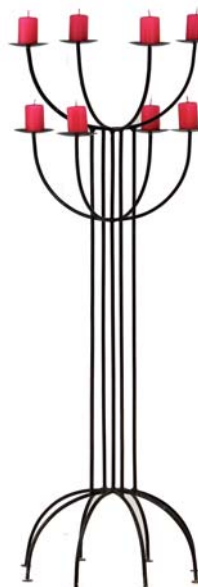
Animation turntable features:

- Maximum supported weight: 25 kg
- Diameter: 55 or 71 or 80 cm - height: 10.6 cm
- Connection type: USB2
- Energy consumption: 24 V (continuous, plugged directly into the photo booth)

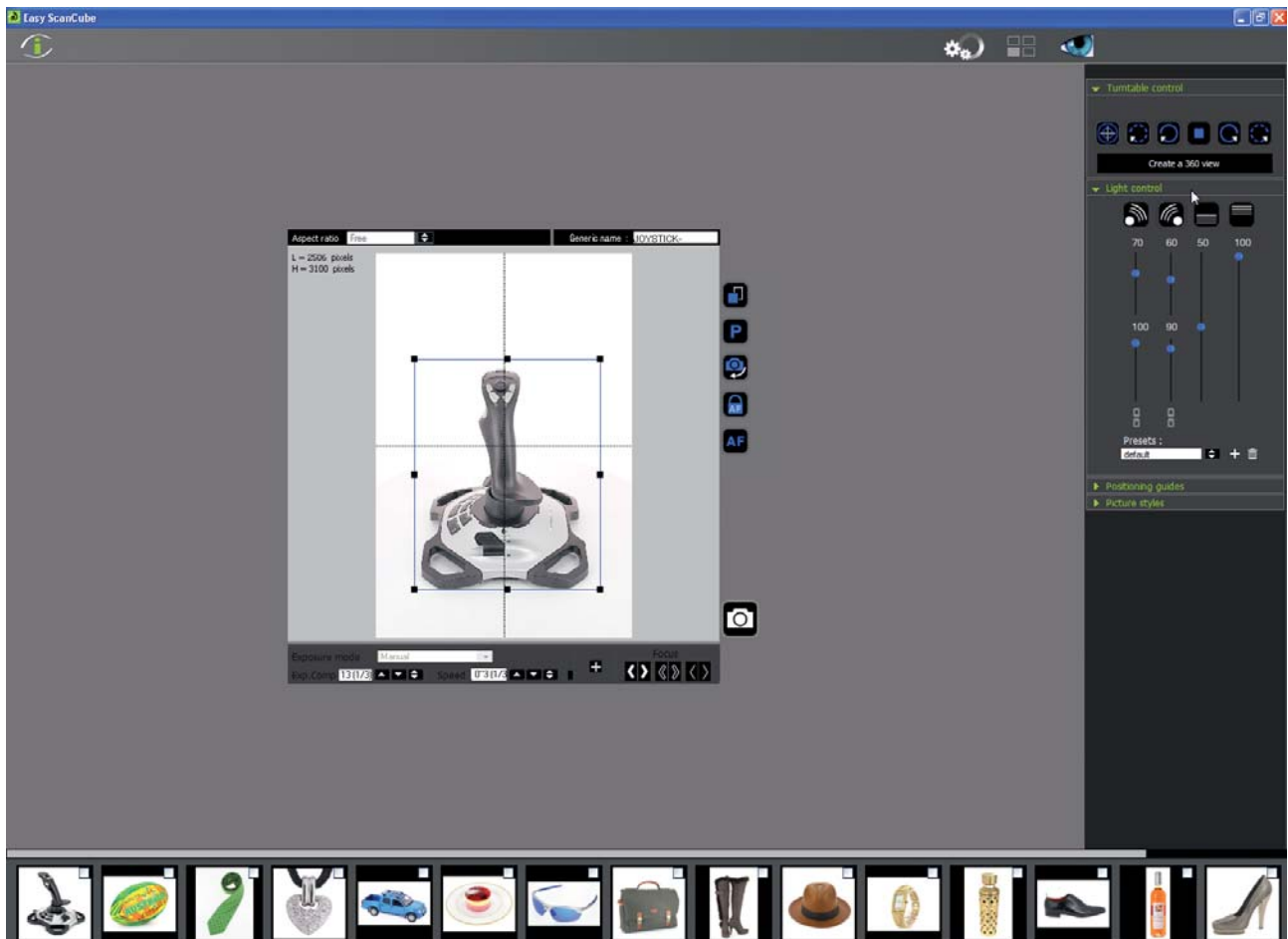
ScanCube 626 and ScanCube 626 e-360 Detailed Product Sheet

key Features	Description	626	626 e-360
Computer-controlled digital camera	Easy-ScanCube software controls the shooting and animation processes. The program remotely pilots all of the digital camera functions with onscreen previews and reframing. Computer-controlled digital camera video mode.	Yes	Yes
Computer-controlled lighting	The six light sources' settings and gradation are completely computer-assisted, with a library of presets available.	Yes	Yes
LED backlighting	The back and the floor of the 626 photo booth are equipped with computer-assisted backlighting. This exclusive, energy-saving LED technology allows for pure white backdrops. Modulation is done by the Easy-ScanCube software and its presetting library. The incorporated color pipette allows you to verify that the background is perfectly white (r=255, g=255, b=255).	Yes	Yes
Turntable control	The Easy-ScanCube software automatically synchronizes the turntable's motion with the shooting, with a preselected number of photos taken per rotation. It also pilots the centering tool's lighting.	-	Yes
Accessory control	Photo booths are configured to allow the Easy-ScanCube software to control current and future accessories. This is, for example, the case of the laser centering tool that saves time spent placing products in the booth.	Yes	Yes
Multi-view animations	Automatic generation of 2D animations in flash, with or without incorporated zoom. This kind of animation is particularly useful to present a line of products (in different colors, for example), a product with a lot of detail, or related products.	Yes	Yes
Customizable 360° Animations	Automatic generation of 360° animations in flash, gif and html5 for perfect compatibility with smartphones; with or without incorporated zoom; selection of the number of photos and animation style; customization of the animations' graphic composition.	-	Yes
360° Product Videos	The Easy-ScanCube software pilots the digital camera's video mode and synchronizes the turntable to generate 360° product videos. These videos are immediately useable on Facebook YouTube, Vimeo, Dailymotion.	-	Yes
Photo Albums	The Easy-ScanCube software's album module allows batches of photos to be treated at once (resizing, renaming, retouching), to create 2D and 3D animations from stocked photos, and organize photo files.	Yes	Yes
Computer-assisted photo editing	The Easy-ScanCube software is no photo editing software but it allows to easily modify the tone of a photo (warmer, cooler), to add contrast, lighter or darker, and to correct a color. These corrections can be saved in a library to be reused later or automatically applied to future images. This function is particularly useful when making animations as it allows the user to treat each photo of a group in the same uniform, automatic and transparent way.	Yes	Yes

Examples of photos taken with the product ScanCube 626



Features Easy-ScanCube software



Easy-ScanCube software shooting features

Preview	On-screen, with the possibility of zooming on a detail to check clarity (only on reflex digital cameras)
On-screen resizing / Aspect ratio	Resize by moving the fists, with the possibility of blocking length / height proportions.
Position memory	Allows an object to be placed in the same exact position as previous products (possibility of creating a library of positioning references).
Digital camera settings	All camera settings are controlled from the screen in auto or manual mode.
Adjusting focus	Autofocus or on-screen control with Easy-ScanCube's zoom adjustment. Blocking/unblocking autofocus feature.
Video Mode management	Yes, with on-screen previews and files saved to the computer in mov format, compatible with all video content sites.
Advanced digital camera settings	For advanced users, possibility of choosing the reference white and modifying the digital camera's internal settings (contrast, chroma, sharpness).
Watermark protection	Yes; may be applied by checking off a box, with customizable placement and transparency.
Program links	From Easy-ScanCube, open photos directly in any editing software such as Photoshop .
Saved formats	Jpg, gif, swf, html, mov.
High Definition management	Standard.
File naming	Automatic naming by incrementation of a pre-determined generic name, to be validated or modified after shooting. Naming function from a database.
Saving photos with or without automatic correction	Possibility of applying an automatic correction while saving.
Verification, comparison, pipette	After shooting, the preview allows one to verify the photo's quality and to test the colors and whiteness of the background with the color pipette. The comparison tool allows side-by-side comparison of 2 to 4 photos.
Active setting display	On-screen, around the preview window.
Compatible digital cameras	See the updated list at www.scancube.fr .

Easy-ScanCube and lighting control

Settings for four direct lights and backlighting	The 6 on-screen cursors allow setting the lighting intensity of each of the four direct lights (2 levels of lighting on the right and the left) and 2 backlighting sources.
Preset library	The preset library allows for fast and consistent production from one user to another

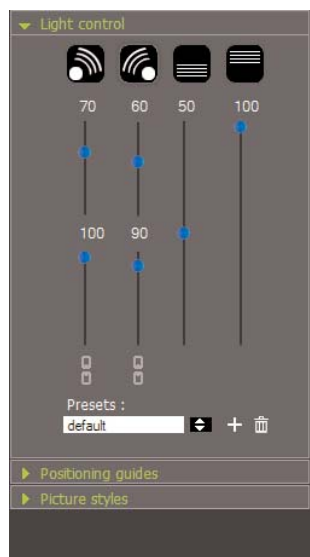
Controlling the turntable and animations with Easy-ScanCube

360° Views	Select the number of photos per turntable rotation, automatic synchronization of shooting and the rotation of the turntable.
Centering products	On-screen control shows up the turntable's center with laser crosshairs.
Various angles	Yes, with saved angle settings.
360° Animation	Choose the animation style, with the possibility of generating many successive styles, and save each photo produced for the animation as a single jpg file.
Animations customization	Customizable graphic style.
360° animation zoom	Possibility to incorporate a zoom and to configure its size.

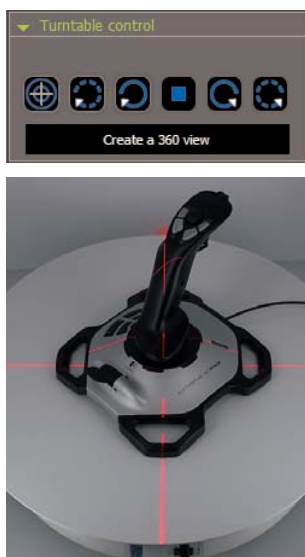
Other Easy-ScanCube features and functions

Photo album module	The photo albums allow users to treat photos in batches (resize, duplication, correction, renaming, optimization), to generate multi-view 360° animations from stocked images, to organize photos and files. From an album the user can also generate high definition images with progressive zoom (progressive zoom speeds up image loading time).
Photo correction module	The photo correction module allows the user to modify saturation, contrast, lighting, and to change different levels and correct tone. Corrections can be saved in a library to be applied to other photos later or automatically during shooting, while being saved.
Workflow	Automation of multiple processes for increased productivity.
Operating systems	Windows XP, Windows 7.

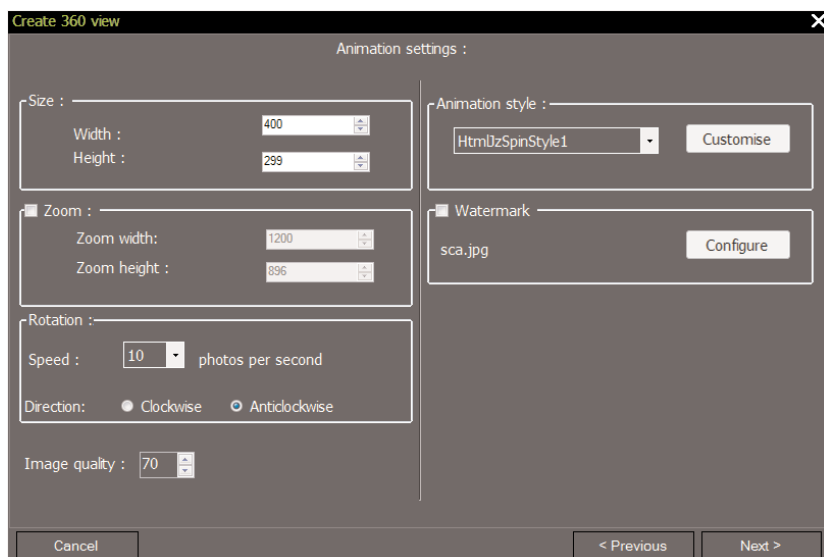
Easy-ScanCube software is regularly updated with new capabilities, following technological advances and our clients' needs. Photo studios come with one year of free updates.



Lighting control panel with its preset library



Turntable and laser centering tool control panel



Setup of 360° animation shooting, with possible correction settings to be applied to all photos

Other characteristics of the 626 photobooth

Structure	The 626 photo booth is rock solid; it is made entirely out of aluminum, and durable components used in aviation technology such as aluminum honeycomb panels.
4 reinforced fixing points	The 626 photo booth's floor sits on 4 reinforced points allowing for installation of existing and future hardware.
Accessory and turntable electrical supply	The 626 photo booth is equipped in front with two 24V sockets to supply options such as the turntable or lighting elements.
Upper compartment Vertical shooting Laser centering tool Nylon suspension thread	The upper compartment is equipped with a USB port, a 3V socket, a 24V socket and two quick attachment points to supply, pilot, and put in place current and future accessories such as: - the adjustable support for vertical shooting (optional) - the computer-piloted laser centering tool (optional) powered by continuous 3 V. - the nylon suspension thread (optional) to hold certain items in position (a bag's handle, for example).
Lamps, color temperature, IRC	The photo booths are equipped with high quality Osram compact fluorescent lamps, with an exceptional color rendering index of 98%. The color temperature is 5400°K. All lamps are guaranteed tested by us, for 100 hours so as to optimize their characteristics. Their life span is over 10,000 hours. The direct lighting is done by 4 of these lamps; their lighting intensity is individually customizable from 0 to 100% on the computer.
Computer connection	2 USB2 connectors on the back of the photo booth.
Electrical box	The sensitive elements are grouped within a removable box, designed for easy customer care, by standard exchange.
Electrical supply	220 /240 V - 3 A
Dimensions and weights	Internal dimensions (cm): Width 85 - depth 89 - height 151 Weight supported by the backlit floor: 35 kg External dimensions (cm): Width 87 - depth 97 - height 169 Photo booth weight: 98 kg Packaged dimensions: Width 93 - depth 103 - height 176 Weight of photo booth + packaging + pallet: 118 kg

Other characteristics of the 626 e-360 studio turntable

Turntable dimensions	Diameter: 550 mm (710 mm optional) Height: 106 mm Weight: 7,5 kg
Supported weight	25 kg
«Lit Center»	The center is marked by a lit red point, computer activated/deactivated.
HFS Technology	Acceleration / Deceleration calculated automatically depending on angles to be taken.
Electrical supply	24 V continuous (plugged into the front side of the photo booth or possibility of plugging into a separate power source).
Computer connection	1 USB2 port.
Operating system	Windows 7, Windows XP.
Note	The 360° animation turntable may be used without the photo booth.

Required configuration: computer with Windows XP or Windows 7 (PC or MAC with Fusion or Parallels desktop), 2 Go of memory, 2 free USB2 ports plus a third if using the turntable, 1 high quality screen (minimum 19", or more ; minimum 900 pixel resolution in height).

ScanCube 626 studio components: 1 Easy-ScanCube software, 1 626 photo booth, 1 tripod, 4 tested compact neon lamps, 1 3m USB2 cable, 1 2m extension USB2 cable, 1 3m 220V power cable.

ScanCube 626 e-360 studio components:

1 Easy-ScanCube software, 1 e-view360 M1 turntable, 1 626 photo booth, 1 tripod, 4 tested compact neon lamps, 2 3m USB2 cables, 1 2m extension USB2 cable, 1 3m 220V power cable, 1 24V power cable.

All of our studios' parts and labor come guaranteed for one year, returnable to our workshops. For more information please read the general terms and conditions of sale available at www.scancube.fr.

SCANCUBE

88, boulevard de MÉNILMONTANT - 75020 PARIS
tél : 33 1 58 53 52 52

www.scancube.fr